

VersiCell®

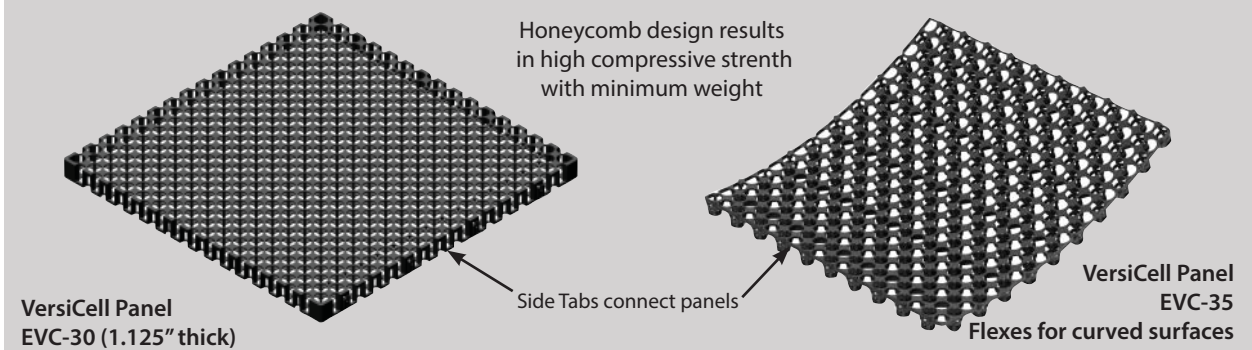
Engineered for superior sub-surface drainage

VersiCell is a sub-surface drainage panel that provides the ultimate combination of strength and water flow capacity. The modular, connectable panels are frequently used in a variety of installations where fast, high-volume water flow is critical. In addition to sub-surface drainage, VersiCell is frequently used in place of heavy gravel aggregates for waterproofing membrane protection, for heat and sound insulation on structures, as a drainage channel, and on subterranean walls to prevent hydrostatic pressure buildup.

Typical applications include greenroofs, under pavers on terraces and patios, subterranean building protection, in on-structure bioretention areas, or as drainage layers inside large planters. Made of 100% recycled polypropylene, rigid panels are available in 1-1/8" (30mm) and 3/4" (20mm) thicknesses. A flexible VersiCell panel in 1-1/8" (30mm) thickness is available for use with curved surfaces. VersiCell is highly inert, and won't break down or crush over the life of a project.



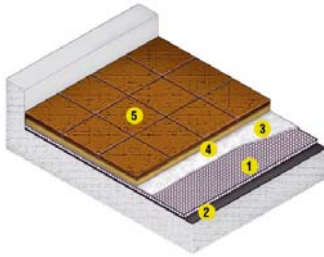
- Modularity makes for fast, easy installation - rigid & flexible panels are trimmed in place
- 100% Post-Consumer Recycled Plastic - Eco-Friendly
- Superior Strength and Higher Flow than typical drainage mats
- Shovel-proof (unlike most other drainage products)



Tournesol
SITE WORKS

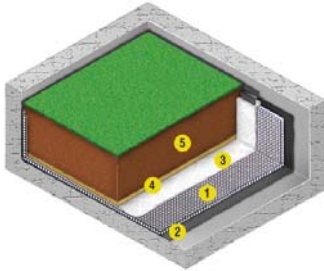
tournesoliteworks.com
800.542.2282

Typical VersiCell Applications



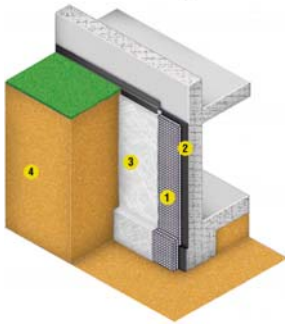
Plaza and Terrace Deck Drainage

1. VersiCell
2. Waterproofing Membrane
3. Landscape Fabric
4. Sand
5. Pavers



Greenroof & Planter Drainage

1. VersiCell (also on planter walls)
2. Waterproofing Membrane
3. Landscape Fabric
4. Coarse Sand
5. Planting Media



Subterranean Wall Protection

1. VersiCell
2. Waterproofing Membrane
3. Landscape Fabric
4. Soil



Specifying VersiCell®

Model No.	Size	Weight (lbs/sq. ft.)	Comp. Strength (lbs-f/sq ft)	Discharge Capacity @ 1% gradient
EVC-20	19.625" x 19.625" x 3/4"h	0.41	20,900	1.32 gal/ft.s
EVC-30	19.625" x 19.625" x 1.18"h	0.51	20,900	1.32 gal/ft.s
EVC-35	19.625" x 19.625" x 1.18"h - flexible panel	0.45	12,500	1.04 gal/ft.s

All VersiCell material is made from 100% post-consumer recycled black polypropylene. VersiCell is mold-, puncture- and rot-resistant, and inert to commonly occurring chemicals.



BETWEEN LANDSCAPE + ARCHITECTURE



Tournesol
SITE WORKS

tournesolsiteworks.com
800.542.2282

EVC213
©2013,
Tournesol Siteworks